

# NEW PARK III



Kimball Junction Location

LEED Silver

Showers

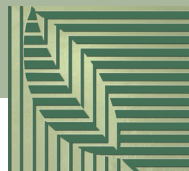
Walking Distance to Shopping  
and Restaurants

Close to Freeway and Bus Line

Parking 3.3/1,000 usf

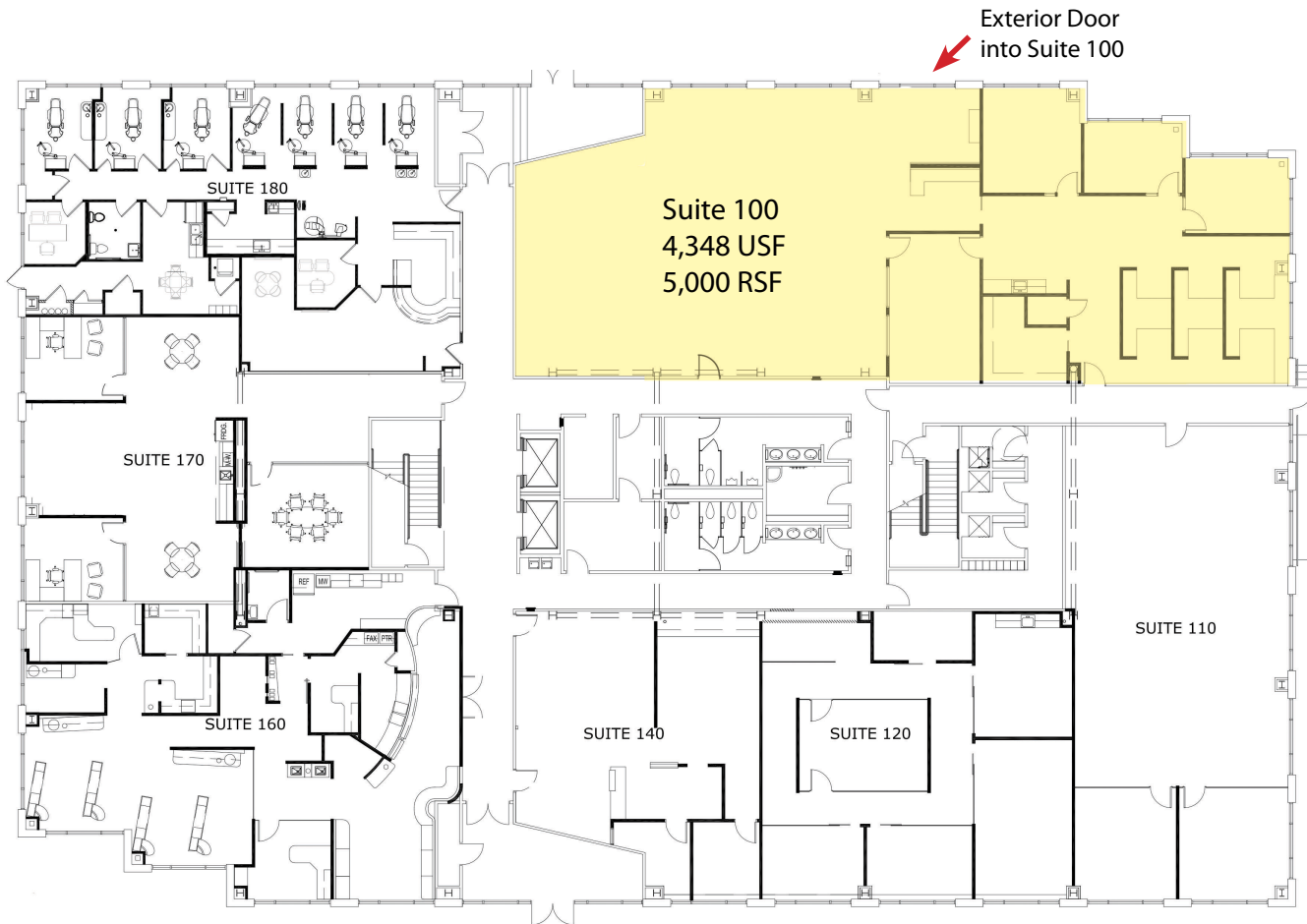
60,722 rsf Building

\$21.00 rsf, NNN



**SAGE**  
REALTY SERVICES

Janet West 801.884.3916 [janet@sagerealtylc.com](mailto:janet@sagerealtylc.com) [www.sagerealtylc.com](http://www.sagerealtylc.com)



# NEW PARK III

1389 Center Drive, Park City, Utah 84098



## Floor Plans

Janet West 801.884.3916 [janet@sagerealtylc.com](mailto:janet@sagerealtylc.com) [www.sagerealtylc.com](http://www.sagerealtylc.com)